




| | | |
|-----------------------------------------|------------------------------------------------------------------------------------------------------------------------------------------------------------------------------------------------------------------------------------------------------------------------------------------------------------------------------------------------------------------------------------------------------------------|--------------------------------------------------|
| SPECIFICATION SHEET NO. | S0120 – RB60M00000L511 | |
| ORIGINAL MFG/PART NO. | TGS Crystals/CO851BGI01 BLF-60M0000 | |
| NEXTGEN PART CODE | RB60M00000L511 | Indicate This Code For RFQ/Order |
| DATE | Jan. 20, 2025 | |
| REVISION | A2 | Updated With Most Recent Data |
| DESCRIPTION AND MAIN PARAMETRICS | <p>MHz Thru-Hole Crystal Oscillator Half-Size/8 Pin, RB series, Dimension L12.7*W12.7*H5.08mm 60.000MHz, Supply Voltage 5.0V, Tolerance ±50ppm, Symmetry 45/55; Operating Temp. Range -40°C ~+85°C, Output Waveform HCMOS, Load 15pF, Tristate Via Pin 1 Package in Tube, 40pcs/Tube REACH/RoHS/RoHS III compliant</p> | |
| CUSTOMER | | |
| CUSTOMER PART NUMBER | | |
| CROSS REF. PART NUMBER | | |
| MEMO | | |

| | | |
|-------------------------------|---------------------------------------------------------------------------------------|--------------------------------------------------------------------------------------|
| VENDOR APPROVE | | |
| Issued/Checked/Approved |  |  |
| |  | |
| Effective Date: Jan. 20, 2025 | | |

| | |
|-------------------------|--|
| CUSTOMER APPROVE | |
| | |
| Date: | |

MAIN FEATURE

- MHz Thru-hole Crystal Oscillator, Half-Size/8 Pin Case
- Dimension L12.7*W12.7*H5.08mm
- Industry-standard
- Hermetically Sealed Package For Reliability
- Tristate Function – Enable/Disable or Tri-State(Output Enable) Via Pin 1
- Cross More Competitor's Part
- REACH/RoHS/RoHS III Compliant

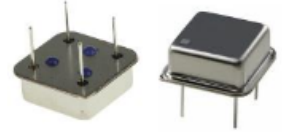


Image shown is a representation only. Exact specifications should be obtained from the product dimension.

APPLICATION

- Communication Electronics



ELECTRICAL CHARACTERISTICS

- See Page 6 ~ Page 26 For Different Part Code.
- All Products Parameters are Subject To NextGen Components' Final Confirmation.

HOW TO ORDER

- Please Follow Up Part Code Guide And Indicate NextGen Part Code RB60M00000L511 For RFQ and Order.

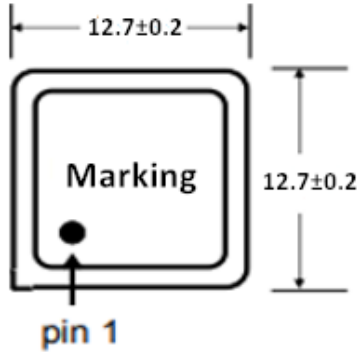
PART CODE GUIDE

RFQ
[Request For Quotation](#)

| CODE | NAME | KEY SPECIFICATION OPTION |
|-------|-----------------------------------|-----------------------------------------------------------------------------------|
| RB | Series Code | MHz Thru-Hole Crystal Oscillator Half-Size/8 Pin Dimension L12.7*W12.7*H5.08mm |
| 60M0 | Frequency Range Code | 60M0: 60.0MHz or Custom Frequency Range |
| 0000L | Internal Control Code | Letter A~Z, a~z or digits (0~9) |
| 511 | Parameters Code | Special Parameters Code Letter A~Z, a~z or digits (1-9) |
| XX | Special/Custom Parameters Code | Blank: N/A XX: Letter A~Z, a~z or digits (0~9) for Special/Custom Parameters |

DIMENSION (Unit: mm)

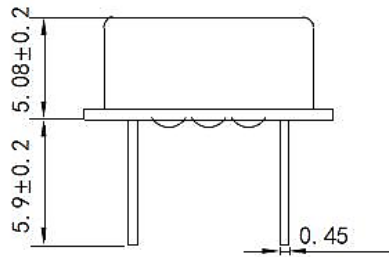
Top View



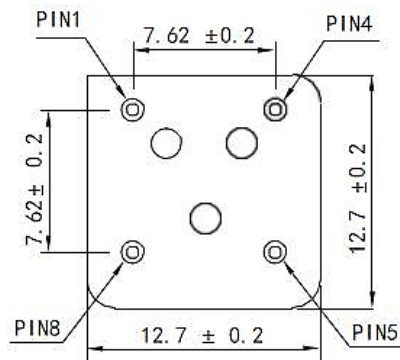
Marking:

Standard

Side View



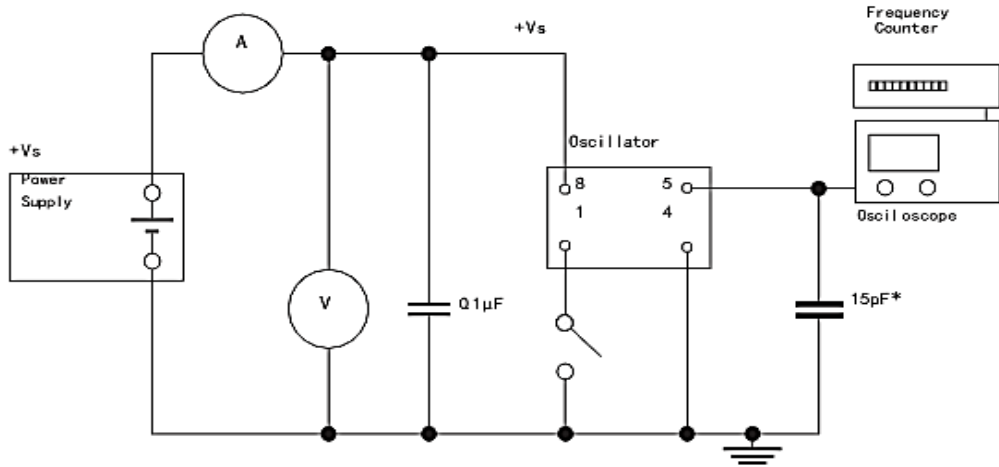
Bottom View



Pin Function

- # 1 Tristate Enable Via #1
- # 4 Ground
- # 5 Output
- # 8 VDD

CIRCUIT PRINCIPLE – For Reference



GENERBL SPECIFICATION

| PARAMETER | SYMBOL | VALUE | | | UNIT | CONDITION |
|-----------------------|---------------|---------------------------------------------------|------|----------|------|-----------------------------------|
| | | MIN. | TYPE | MAX. | | |
| Frequency Range | F0 | 0.5 | | 200.0 | MHz | Please specify |
| Supply Voltage | | 1.8, 2.5, 3.3, 5.0 | | | V | Please specify |
| Frequency Tolerance | $\Delta F/F0$ | ± 20 | - | ± 50 | ppm | at 25°C $\pm 10^\circ\text{C}$ |
| Tristate Function | | Disable or Tri-State (Output Enable) Via Pin 1 | | | | Please specify |
| Operating Temp. Range | TOPR | -40 | - | +85 | °C | Standard |
| Storage Temp. Range | TSTG | -40 | - | +125 | °C | |
| Symmetry | % | 45 | | 55 | | Max.@(1/2 VDC) |
| Output | VOH | 90% | | | V | $V_{DD}(\text{Min.})/2.4\text{V}$ |
| | VOL | | | 10% | V | $V_{DD}(\text{Max.})/0.4\text{V}$ |
| | Load | 15, 30, 50 | | | pF | Please specify |
| Output Waveform | | TTL, HCMOS | | | | Please specify |
| Startup Time | | | | 5 | ms | |
| Supply Current | | | | 30 | mA | |
| Rise/ Fall time | | | | 10 | ns | @ 0.5-4.5 V _{DC} |
| Phase Jitter | ps | Standard | | | | |
| Aging per year | Fa | -5 | - | +5 | ppm | |

ENVIRONMENTAL AND TECHNICAL CONDITIONS

| TEST ITEMS | TEST METHOD AND CONDITIONS |
|---------------------|-----------------------------------------------------------|
| Temperature Cycle | Mil-std 883, Method 1010, 10 Cycles -20° C To 85° C |
| Shock | Mil-std-202, Method 213, Test Condition C |
| Vibration | Mil-std-202, Method 204, Test Condition A |
| Resistance To | Mil-std-202, Method 210, Test Condition B |
| Humidity | 85% Relative Humidity At 85° C 250 Hours |
| Gross Leak Test | Mil-std-883, Method 1014, Test Condition C |
| Fine Leak Test | Mil-std-883, Method 1014, Test Condition A |
| Terminal Strength | Mil-std-202, Method 211, Test Condition A And C |
| Moisture Resistance | Moisture Resistance Mil-std 202, Method 106, Omit Step 7b |
| Solderability | Mil-std-202, Method 208, 95% Coverage |

ELECTRICAL PARAMETERS – FOR DIFFERENT PART CODE- Ta = 25°C

| PART CODE | FREQUENCY RANGE | SUPPLY VOLTAGE | FREQUENCY Tolerance | OUTPUT WAVEFORM | OUTLOAD | TRISTATE FUNCTION |
|----------------|-----------------|----------------|---------------------|-----------------|---------|---------------------------|
| | MHz | V | ppm | | pF | |
| RB500K0000L311 | 0.500000 | 3.3 | ±50 | HCMOS | 15 | Tri-State (Output Enable) |
| RB500K0000L313 | 0.500000 | 3.3 | ±50 | HCMOS | 30 | Tri-State (Output Enable) |
| RB500K0000L315 | 0.500000 | 3.3 | ±50 | HCMOS | 50 | Tri-State (Output Enable) |
| RB500K0000L501 | 0.500000 | 3.3 | ±30 | HCMOS | 15 | Enable/Disable |
| RB500K0000L511 | 0.500000 | 5.0 | ±50 | HCMOS | 15 | Tri-State (Output Enable) |
| RB500K0000L100 | 0.500000 | 5.0 | ±50 | HCMOS | 15 | Enable/Disable |
| RB500K0000L513 | 0.500000 | 5.0 | ±50 | HCMOS | 30 | Tri-State (Output Enable) |
| RB500K0000L515 | 0.500000 | 5.0 | ±50 | HCMOS | 50 | Tri-State (Output Enable) |
| RB1M000000L311 | 1.000000 | 3.3 | ±50 | HCMOS | 15 | Tri-State (Output Enable) |
| RB1M000000L313 | 1.000000 | 3.3 | ±50 | HCMOS | 30 | Tri-State (Output Enable) |
| RB1M000000L315 | 1.000000 | 3.3 | ±50 | HCMOS | 50 | Tri-State (Output Enable) |
| RB1M000000L511 | 1.000000 | 5.0 | ±50 | HCMOS | 15 | Tri-State (Output Enable) |
| RB1M000000L513 | 1.000000 | 5.0 | ±50 | HCMOS | 30 | Tri-State (Output Enable) |
| RB1M000000L515 | 1.000000 | 5.0 | ±50 | HCMOS | 50 | Tri-State (Output Enable) |
| RB1M228800L311 | 1.228800 | 3.3 | ±50 | HCMOS | 15 | Tri-State (Output Enable) |
| RB1M228800L313 | 1.228800 | 3.3 | ±50 | HCMOS | 30 | Tri-State (Output Enable) |
| RB1M228800L315 | 1.228800 | 3.3 | ±50 | HCMOS | 50 | Tri-State (Output Enable) |
| RB1M228800L511 | 1.228800 | 5.0 | ±50 | HCMOS | 15 | Tri-State (Output Enable) |
| RB1M228800L513 | 1.228800 | 5.0 | ±50 | HCMOS | 30 | Tri-State (Output Enable) |
| RB1M228800L515 | 1.228800 | 5.0 | ±50 | HCMOS | 50 | Tri-State (Output Enable) |

ELECTRICAL PARAMETERS – FOR DIFFERENT PART CODE- Ta = 25°C

| PART CODE | FREQUENCY RANGE | SUPPLY VOLTAGE | FREQUENCY Tolerance | OUTPUT WAVEFORM | OUTLOAD | TRISTATE FUNCTION |
|----------------|-----------------|----------------|---------------------|-----------------|---------|---------------------------|
| | MHz | V | ppm | | pF | |
| RB1M544000L311 | 1.544000 | 3.3 | ±50 | HCMOS | 15 | Tri-State (Output Enable) |
| RB1M544000L313 | 1.544000 | 3.3 | ±50 | HCMOS | 30 | Tri-State (Output Enable) |
| RB1M544000L315 | 1.544000 | 3.3 | ±50 | HCMOS | 50 | Tri-State (Output Enable) |
| RB1M843200L001 | 1.843200 | 3.3 | ±50 | TTL | 15 | Enable/Disable |
| RB1M843200L311 | 1.843200 | 3.3 | ±50 | HCMOS | 15 | Tri-State (Output Enable) |
| RB1M843200L313 | 1.843200 | 3.3 | ±50 | HCMOS | 30 | Tri-State (Output Enable) |
| RB1M843200L315 | 1.843200 | 3.3 | ±50 | HCMOS | 50 | Tri-State (Output Enable) |
| RB1M843200L501 | 1.843200 | 5.0 | ±50 | HCMOS | 15 | Enable/Disable |
| RB1M843200L511 | 1.843200 | 5.0 | ±50 | HCMOS | 15 | Tri-State (Output Enable) |
| RB1M843200L513 | 1.843200 | 5.0 | ±50 | HCMOS | 30 | Tri-State (Output Enable) |
| RB1M843200L515 | 1.843200 | 5.0 | ±30 | HCMOS | 50 | Tri-State (Output Enable) |
| RB1M843200L100 | 1.843200 | 5.0 | ±50 | HCMOS | 50 | Tri-State (Output Enable) |
| RB2M000000L103 | 2.000000 | 5.0 | ±50 | HCMOS | 15 | Enable/Disable |
| RB2M048000L001 | 2.048000 | 5.0 | ±50 | TTL | 15 | Enable/Disable |
| RB2M048000L311 | 2.048000 | 3.3 | ±50 | HCMOS | 15 | Tri-State (Output Enable) |
| RB2M048000L313 | 2.048000 | 3.3 | ±50 | HCMOS | 30 | Tri-State (Output Enable) |
| RB2M048000L315 | 2.048000 | 3.3 | ±50 | HCMOS | 50 | Tri-State (Output Enable) |
| RB2M048000L511 | 2.048000 | 5.0 | ±50 | HCMOS | 15 | Tri-State (Output Enable) |
| RB2M048000L513 | 2.048000 | 5.0 | ±50 | HCMOS | 30 | Tri-State (Output Enable) |
| RB2M048000L515 | 2.048000 | 5.0 | ±30 | HCMOS | 50 | Tri-State (Output Enable) |

ELECTRICAL PARAMETERS – FOR DIFFERENT PART CODE- Ta = 25°C

| PART CODE | FREQUENCY RANGE | SUPPLY VOLTAGE | FREQUENCY Tolerance | OUTPUT WAVEFORM | OUTLOAD | TRISTATE FUNCTION |
|----------------|-----------------|----------------|---------------------|-----------------|---------|---------------------------|
| | MHz | V | ppm | | pF | |
| RB2M457600L100 | 2.457600 | 5.0 | ±50 | HCMOS | 50 | Tri-State (Output Enable) |
| RB2M457600L311 | 2.457600 | 3.3 | ±50 | HCMOS | 15 | Tri-State (Output Enable) |
| RB2M457600L313 | 2.457600 | 3.3 | ±50 | HCMOS | 30 | Tri-State (Output Enable) |
| RB2M457600L315 | 2.457600 | 3.3 | ±50 | HCMOS | 50 | Tri-State (Output Enable) |
| RB2M457600L511 | 2.457600 | 5.0 | ±50 | HCMOS | 15 | Tri-State (Output Enable) |
| RB2M457600L513 | 2.457600 | 5.0 | ±50 | HCMOS | 30 | Tri-State (Output Enable) |
| RB2M457600L515 | 2.457600 | 5.0 | ±30 | HCMOS | 50 | Tri-State (Output Enable) |
| RB3M072000L311 | 3.072000 | 3.3 | ±50 | HCMOS | 15 | Tri-State (Output Enable) |
| RB3M072000L313 | 3.072000 | 3.3 | ±50 | HCMOS | 30 | Tri-State (Output Enable) |
| RB3M072000L315 | 3.072000 | 3.3 | ±50 | HCMOS | 50 | Tri-State (Output Enable) |
| RB3M072000L511 | 3.072000 | 5.0 | ±50 | HCMOS | 15 | Tri-State (Output Enable) |
| RB3M072000L513 | 3.072000 | 5.0 | ±50 | HCMOS | 30 | Tri-State (Output Enable) |
| RB3M072000L515 | 3.072000 | 5.0 | ±30 | HCMOS | 50 | Tri-State (Output Enable) |
| RB3M072000L100 | 3.072000 | 5.0 | ±50 | HCMOS | 50 | Tri-State (Output Enable) |
| RB3M579545L311 | 3.579545 | 3.3 | ±50 | HCMOS | 15 | Tri-State (Output Enable) |
| RB3M579545L313 | 3.579545 | 3.3 | ±50 | HCMOS | 30 | Tri-State (Output Enable) |
| RB3M579545L315 | 3.579545 | 3.3 | ±50 | HCMOS | 50 | Tri-State (Output Enable) |
| RB3M579545L511 | 3.579545 | 5.0 | ±50 | HCMOS | 15 | Tri-State (Output Enable) |
| RB3M579545L513 | 3.579545 | 5.0 | ±50 | HCMOS | 30 | Tri-State (Output Enable) |
| RB3M579545L515 | 3.579545 | 5.0 | ±50 | HCMOS | 50 | Tri-State (Output Enable) |

ELECTRICAL PARAMETERS – FOR DIFFERENT PART CODE- Ta = 25°C

| PART CODE | FREQUENCY RANGE | SUPPLY VOLTAGE | FREQUENCY Tolerance | OUTPUT WAVEFORM | OUTLOAD | TRISTATE FUNCTION |
|----------------|-----------------|----------------|---------------------|-----------------|---------|---------------------------|
| | MHz | V | ppm | | pF | |
| RB3M686400L100 | 3.686400 | 5.0 | ±50 | HCMOS | 50 | Tri-State (Output Enable) |
| RB3M686400L311 | 3.686400 | 3.3 | ±50 | HCMOS | 15 | Tri-State (Output Enable) |
| RB3M686400L313 | 3.686400 | 3.3 | ±50 | HCMOS | 30 | Tri-State (Output Enable) |
| RB3M686400L315 | 3.686400 | 3.3 | ±50 | HCMOS | 50 | Tri-State (Output Enable) |
| RB3M686400L511 | 3.686400 | 5.0 | ±50 | HCMOS | 15 | Tri-State (Output Enable) |
| RB3M686400L513 | 3.686400 | 5.0 | ±50 | HCMOS | 30 | Tri-State (Output Enable) |
| RB3M686400L515 | 3.686400 | 5.0 | ±30 | HCMOS | 50 | Tri-State (Output Enable) |
| RB4M000000L100 | 4.000000 | 5.0 | ±50 | HCMOS | 50 | Tri-State (Output Enable) |
| RB4M000000L311 | 4.000000 | 3.3 | ±50 | HCMOS | 15 | Tri-State (Output Enable) |
| RB4M000000L313 | 4.000000 | 3.3 | ±50 | HCMOS | 30 | Tri-State (Output Enable) |
| RB4M000000L315 | 4.000000 | 3.3 | ±50 | HCMOS | 50 | Tri-State (Output Enable) |
| RB4M000000L501 | 4.000000 | 5.0 | ±50 | HCMOS | 15 | Enable/Disable |
| RB4M000000L101 | 4.000000 | 5.0 | ±50 | HCMOS | 15 | Enable/Disable |
| RB4M000000L511 | 4.000000 | 5.0 | ±30 | HCMOS | 15 | Tri-State (Output Enable) |
| RB4M000000L513 | 4.000000 | 5.0 | ±50 | HCMOS | 30 | Tri-State (Output Enable) |
| RB4M000000L515 | 4.000000 | 5.0 | ±30 | HCMOS | 50 | Tri-State (Output Enable) |
| RB4M096000L100 | 4.096000 | 5.0 | ±50 | HCMOS | 50 | Tri-State (Output Enable) |
| RB4M096000L311 | 4.096000 | 3.3 | ±50 | HCMOS | 15 | Tri-State (Output Enable) |
| RB4M096000L313 | 4.096000 | 3.3 | ±50 | HCMOS | 30 | Tri-State (Output Enable) |
| RB4M096000L315 | 4.096000 | 3.3 | ±50 | HCMOS | 50 | Tri-State (Output Enable) |

ELECTRICAL PARAMETERS – FOR DIFFERENT PART CODE- Ta = 25°C

| PART CODE | FREQUENCY RANGE | SUPPLY VOLTAGE | FREQUENCY Tolerance | OUTPUT WAVEFORM | OUTLOAD | TRISTATE FUNCTION |
|----------------|-----------------|----------------|---------------------|-----------------|---------|---------------------------|
| | MHz | V | ppm | | pF | |
| RB4M096000L511 | 4.096000 | 5.0 | ±50 | HCMOS | 15 | Tri-State (Output Enable) |
| RB4M096000L513 | 4.096000 | 5.0 | ±50 | HCMOS | 30 | Tri-State (Output Enable) |
| RB4M096000L515 | 4.096000 | 5.0 | ±30 | HCMOS | 50 | Tri-State (Output Enable) |
| RB4M915200L100 | 4.915200 | 5.0 | ±50 | HCMOS | 50 | Tri-State (Output Enable) |
| RB4M915200L101 | 4.915200 | 3.3 | ±50 | TTL | 15 | Tri-State (Output Enable) |
| RB4M915200L311 | 4.915200 | 3.3 | ±30 | HCMOS | 15 | Tri-State (Output Enable) |
| RB4M915200L313 | 4.915200 | 3.3 | ±50 | HCMOS | 30 | Tri-State (Output Enable) |
| RB4M915200L315 | 4.915200 | 3.3 | ±50 | HCMOS | 50 | Tri-State (Output Enable) |
| RB4M915200L511 | 4.915200 | 5.0 | ±50 | HCMOS | 15 | Tri-State (Output Enable) |
| RB4M915200L513 | 4.915200 | 5.0 | ±50 | HCMOS | 30 | Tri-State (Output Enable) |
| RB4M915200L515 | 4.915200 | 5.0 | ±30 | HCMOS | 50 | Tri-State (Output Enable) |
| RB5M000000L311 | 5.000000 | 3.3 | ±50 | HCMOS | 15 | Tri-State (Output Enable) |
| RB5M000000L313 | 5.000000 | 3.3 | ±50 | HCMOS | 30 | Tri-State (Output Enable) |
| RB5M000000L315 | 5.000000 | 3.3 | ±50 | HCMOS | 50 | Tri-State (Output Enable) |
| RB5M000000L511 | 5.000000 | 5.0 | ±50 | HCMOS | 15 | Tri-State (Output Enable) |
| RB5M000000L513 | 5.000000 | 5.0 | ±50 | HCMOS | 30 | Tri-State (Output Enable) |
| RB5M000000L515 | 5.000000 | 5.0 | ±50 | HCMOS | 50 | Tri-State (Output Enable) |
| RB6M000000L100 | 6.000000 | 5.0 | ±50 | HCMOS | 50 | Tri-State (Output Enable) |
| RB6M000000L311 | 6.000000 | 3.3 | ±50 | HCMOS | 15 | Tri-State (Output Enable) |
| RB6M000000L313 | 6.000000 | 3.3 | ±50 | HCMOS | 30 | Tri-State (Output Enable) |

ELECTRICAL PARAMETERS – FOR DIFFERENT PART CODE- Ta = 25°C

| PART CODE | FREQUENCY RANGE | SUPPLY VOLTAGE | FREQUENCY Tolerance | OUTPUT WAVEFORM | OUTLOAD | TRISTATE FUNCTION |
|----------------|-----------------|----------------|---------------------|-----------------|---------|---------------------------|
| | MHz | V | ppm | | pF | |
| RB6M000000L315 | 6.000000 | 3.3 | ±50 | HCMOS | 50 | Tri-State (Output Enable) |
| RB6M000000L511 | 6.000000 | 5.0 | ±50 | HCMOS | 15 | Tri-State (Output Enable) |
| RB6M000000L513 | 6.000000 | 5.0 | ±50 | HCMOS | 30 | Tri-State (Output Enable) |
| RB6M000000L515 | 6.000000 | 5.0 | ±30 | HCMOS | 50 | Tri-State (Output Enable) |
| RB6M144000L311 | 6.144400 | 3.3 | ±50 | HCMOS | 15 | Tri-State (Output Enable) |
| RB6M144000L313 | 6.144400 | 3.3 | ±50 | HCMOS | 30 | Tri-State (Output Enable) |
| RB6M144000L315 | 6.144400 | 3.3 | ±50 | HCMOS | 50 | Tri-State (Output Enable) |
| RB6M144000L511 | 6.144400 | 5.0 | ±50 | HCMOS | 15 | Tri-State (Output Enable) |
| RB6M144000L513 | 6.144400 | 5.0 | ±50 | HCMOS | 30 | Tri-State (Output Enable) |
| RB6M144000L515 | 6.144400 | 5.0 | ±50 | HCMOS | 50 | Tri-State (Output Enable) |
| RB7M372800L100 | 7.372800 | 5.0 | ±50 | HCMOS | 50 | Tri-State (Output Enable) |
| RB7M372800L101 | 7.372800 | 5.0 | ±50 | HCMOS | 15 | Enable/Disable |
| RB7M372800L103 | 7.372800 | 5.0 | ±50 | HCMOS | 15 | Tri-State (Output Enable) |
| RB7M372800L311 | 7.372800 | 3.3 | ±50 | HCMOS | 15 | Tri-State (Output Enable) |
| RB7M372800L313 | 7.372800 | 3.3 | ±50 | HCMOS | 30 | Tri-State (Output Enable) |
| RB7M372800L315 | 7.372800 | 3.3 | ±50 | HCMOS | 50 | Tri-State (Output Enable) |
| RB7M372800L501 | 7.372800 | 5.0 | ±30 | HCMOS | 15 | Enable/Disable |
| RB7M372800L511 | 7.372800 | 5.0 | ±30 | HCMOS | 15 | Tri-State (Output Enable) |
| RB7M372800L513 | 7.372800 | 5.0 | ±50 | HCMOS | 30 | Tri-State (Output Enable) |
| RB7M372800L515 | 7.372800 | 5.0 | ±30 | HCMOS | 50 | Tri-State (Output Enable) |

ELECTRICAL PARAMETERS – FOR DIFFERENT PART CODE- Ta = 25°C

| PART CODE | FREQUENCY RANGE | SUPPLY VOLTAGE | FREQUENCY Tolerance | OUTPUT WAVEFORM | OUTLOAD | TRISTATE FUNCTION |
|----------------|-----------------|----------------|---------------------|-----------------|---------|---------------------------|
| | MHz | V | ppm | | pF | |
| RB8M000000L100 | 8.000000 | 5.0 | ±50 | HCMOS | 50 | Tri-State (Output Enable) |
| RB8M000000L102 | 8.000000 | 5.0 | ±50 | HCMOS | 30 | Enable/Disable |
| RB8M000000L103 | 8.000000 | 5.0 | ±30 | HCMOS | 50 | Tri-State (Output Enable) |
| RB8M000000L104 | 8.000000 | 5.0 | ±50 | HCMOS | 15 | Enable/Disable |
| RB8M000000L311 | 8.000000 | 3.3 | ±50 | HCMOS | 15 | Tri-State (Output Enable) |
| RB8M000000L313 | 8.000000 | 3.3 | ±50 | HCMOS | 30 | Tri-State (Output Enable) |
| RB8M000000L315 | 8.000000 | 3.3 | ±50 | HCMOS | 50 | Tri-State (Output Enable) |
| RB8M000000L501 | 8.000000 | 5.0 | ±30 | HCMOS | 15 | Enable/Disable |
| RB8M000000L503 | 8.000000 | 5.0 | ±30 | HCMOS | 30 | Enable/Disable |
| RB8M000000L511 | 8.000000 | 5.0 | ±30 | HCMOS | 15 | Tri-State (Output Enable) |
| RB8M000000L513 | 8.000000 | 5.0 | ±50 | HCMOS | 30 | Tri-State (Output Enable) |
| RB8M000000L515 | 8.000000 | 5.0 | ±25 | HCMOS | 50 | Tri-State (Output Enable) |
| RB9M375000L100 | 9.375000 | 3.3 | ±50 | TTL | 15 | Enable/Disable |
| RB9M375000L311 | 9.375000 | 3.3 | ±50 | HCMOS | 15 | Tri-State (Output Enable) |
| RB9M375000L313 | 9.375000 | 3.3 | ±50 | HCMOS | 30 | Tri-State (Output Enable) |
| RB9M375000L315 | 9.375000 | 3.3 | ±50 | HCMOS | 50 | Tri-State (Output Enable) |
| RB9M375000L511 | 9.375000 | 5.0 | ±50 | HCMOS | 15 | Tri-State (Output Enable) |
| RB9M375000L513 | 9.375000 | 5.0 | ±50 | HCMOS | 30 | Tri-State (Output Enable) |
| RB9M375000L515 | 9.375000 | 5.0 | ±50 | HCMOS | 50 | Tri-State (Output Enable) |
| RB9M830400L100 | 9.830400 | 5.0 | ±50 | HCMOS | 50 | Tri-State (Output Enable) |

ELECTRICAL PARAMETERS – FOR DIFFERENT PART CODE- Ta = 25°C

| PART CODE | FREQUENCY RANGE | SUPPLY VOLTAGE | FREQUENCY Tolerance | OUTPUT WAVEFORM | OUTLOAD | TRISTATE FUNCTION |
|----------------|-----------------|----------------|---------------------|-----------------|---------|---------------------------|
| | MHz | V | ppm | | pF | |
| RB9M830400L311 | 9.830400 | 3.3 | ±50 | HCMOS | 15 | Tri-State (Output Enable) |
| RB9M830400L313 | 9.830400 | 3.3 | ±50 | HCMOS | 30 | Tri-State (Output Enable) |
| RB9M830400L315 | 9.830400 | 3.3 | ±50 | HCMOS | 50 | Tri-State (Output Enable) |
| RB9M830400L511 | 9.830400 | 5.0 | ±50 | HCMOS | 15 | Tri-State (Output Enable) |
| RB9M830400L513 | 9.830400 | 5.0 | ±50 | HCMOS | 30 | Tri-State (Output Enable) |
| RB9M830400L515 | 9.830400 | 5.0 | ±30 | HCMOS | 50 | Tri-State (Output Enable) |
| RB10M00000L100 | 10.000000 | 5.0 | ±50 | HCMOS | 50 | Tri-State (Output Enable) |
| RB10M00000L101 | 10.000000 | 5.0 | ±50 | HCMOS | 50 | Enable/Disable |
| RB10M00000L311 | 10.000000 | 3.3 | ±50 | HCMOS | 15 | Tri-State (Output Enable) |
| RB10M00000L313 | 10.000000 | 3.3 | ±50 | HCMOS | 30 | Tri-State (Output Enable) |
| RB10M00000L315 | 10.000000 | 3.3 | ±50 | HCMOS | 50 | Tri-State (Output Enable) |
| RB10M00000L505 | 10.000000 | 5.0 | ±30 | HCMOS | 50 | Enable/Disable |
| RB10M00000L511 | 10.000000 | 5.0 | ±50 | HCMOS | 15 | Tri-State (Output Enable) |
| RB10M00000L513 | 10.000000 | 5.0 | ±50 | HCMOS | 30 | Tri-State (Output Enable) |
| RB10M00000L515 | 10.000000 | 5.0 | ±30 | HCMOS | 50 | Tri-State (Output Enable) |
| RB11M05920L311 | 11.059200 | 3.3 | ±50 | HCMOS | 15 | Tri-State (Output Enable) |
| RB11M05920L313 | 11.059200 | 3.3 | ±50 | HCMOS | 30 | Tri-State (Output Enable) |
| RB11M05920L315 | 11.059200 | 3.3 | ±50 | HCMOS | 50 | Tri-State (Output Enable) |
| RB11M05920L511 | 11.059200 | 5.0 | ±50 | HCMOS | 15 | Tri-State (Output Enable) |
| RB11M05920L513 | 11.059200 | 5.0 | ±50 | HCMOS | 30 | Tri-State (Output Enable) |

ELECTRICAL PARAMETERS – FOR DIFFERENT PART CODE- Ta = 25°C

| PART CODE | FREQUENCY RANGE | SUPPLY VOLTAGE | FREQUENCY Tolerance | OUTPUT WAVEFORM | OUTLOAD | TRISTATE FUNCTION |
|----------------|-----------------|----------------|---------------------|-----------------|---------|---------------------------|
| | MHz | V | ppm | | pF | |
| RB11M05920L515 | 11.059200 | 5.0 | ±50 | HCMOS | 50 | Tri-State (Output Enable) |
| RB12M00000L100 | 12.000000 | 5.0 | ±50 | HCMOS | 50 | Tri-State (Output Enable) |
| RB12M00000L311 | 12.000000 | 3.3 | ±50 | HCMOS | 15 | Tri-State (Output Enable) |
| RB12M00000L313 | 12.000000 | 3.3 | ±50 | HCMOS | 30 | Tri-State (Output Enable) |
| RB12M00000L315 | 12.000000 | 3.3 | ±50 | HCMOS | 50 | Tri-State (Output Enable) |
| RB12M00000L511 | 12.000000 | 5.0 | ±50 | HCMOS | 10 | Tri-State (Output Enable) |
| RB12M00000L513 | 12.000000 | 5.0 | ±50 | HCMOS | 30 | Tri-State (Output Enable) |
| RB12M00000L515 | 12.000000 | 5.0 | ±30 | HCMOS | 50 | Tri-State (Output Enable) |
| RB12M28800L100 | 12.288000 | 5.0 | ±50 | HCMOS | 50 | Tri-State (Output Enable) |
| RB12M28800L101 | 12.288000 | 5.0 | ±30 | HCMOS | 15 | Tri-State (Output Enable) |
| RB12M28800L311 | 12.288000 | 3.3 | ±50 | HCMOS | 15 | Tri-State (Output Enable) |
| RB12M28800L313 | 12.288000 | 3.3 | ±50 | HCMOS | 30 | Tri-State (Output Enable) |
| RB12M28800L315 | 12.288000 | 3.3 | ±50 | HCMOS | 50 | Tri-State (Output Enable) |
| RB12M28800L511 | 12.288000 | 5.0 | ±50 | HCMOS | 15 | Tri-State (Output Enable) |
| RB12M28800L513 | 12.288000 | 5.0 | ±50 | HCMOS | 30 | Tri-State (Output Enable) |
| RB12M28800L515 | 12.288000 | 5.0 | ±30 | HCMOS | 50 | Tri-State (Output Enable) |
| RB14M31818L100 | 14.318180 | 5.0 | ±50 | HCMOS | 50 | Tri-State (Output Enable) |
| RB14M31818L311 | 14.318180 | 3.3 | ±50 | HCMOS | 15 | Tri-State (Output Enable) |
| RB14M31818L313 | 14.318180 | 3.3 | ±50 | HCMOS | 30 | Tri-State (Output Enable) |
| RB14M31818L315 | 14.318180 | 3.3 | ±50 | HCMOS | 50 | Tri-State (Output Enable) |

ELECTRICAL PARAMETERS – FOR DIFFERENT PART CODE- Ta = 25°C

| PART CODE | FREQUENCY RANGE | SUPPLY VOLTAGE | FREQUENCY Tolerance | OUTPUT WAVEFORM | OUTLOAD | TRISTATE FUNCTION |
|----------------|-----------------|----------------|---------------------|-----------------|---------|---------------------------|
| | MHz | V | ppm | | pF | |
| RB14M31818L511 | 14.318180 | 5.0 | ±50 | HCMOS | 15 | Tri-State (Output Enable) |
| RB14M31818L513 | 14.318180 | 5.0 | ±50 | HCMOS | 30 | Tri-State (Output Enable) |
| RB14M31818L515 | 14.318180 | 5.0 | ±30 | HCMOS | 50 | Tri-State (Output Enable) |
| RB14M74560L100 | 14.745600 | 5.0 | ±50 | HCMOS | 50 | Tri-State (Output Enable) |
| RB14M74560L311 | 14.745600 | 3.3 | ±50 | HCMOS | 15 | Tri-State (Output Enable) |
| RB14M74560L313 | 14.745600 | 3.3 | ±50 | HCMOS | 30 | Tri-State (Output Enable) |
| RB14M74560L315 | 14.745600 | 3.3 | ±50 | HCMOS | 50 | Tri-State (Output Enable) |
| RB14M74560L511 | 14.745600 | 5.0 | ±50 | HCMOS | 15 | Tri-State (Output Enable) |
| RB14M74560L513 | 14.745600 | 5.0 | ±50 | HCMOS | 30 | Tri-State (Output Enable) |
| RB14M74560L515 | 14.745600 | 5.0 | ±30 | HCMOS | 50 | Tri-State (Output Enable) |
| RB15M00000L311 | 15.000000 | 3.3 | ±50 | HCMOS | 15 | Tri-State (Output Enable) |
| RB15M00000L313 | 15.000000 | 3.3 | ±50 | HCMOS | 30 | Tri-State (Output Enable) |
| RB15M00000L315 | 15.000000 | 3.3 | ±50 | HCMOS | 50 | Tri-State (Output Enable) |
| RB15M00000L511 | 15.000000 | 5.0 | ±50 | HCMOS | 15 | Tri-State (Output Enable) |
| RB15M00000L513 | 15.000000 | 5.0 | ±50 | HCMOS | 30 | Tri-State (Output Enable) |
| RB15M00000L515 | 15.000000 | 5.0 | ±50 | HCMOS | 50 | Tri-State (Output Enable) |
| RB16M00000L100 | 16.000000 | 5.0 | ±50 | HCMOS | 50 | Tri-State (Output Enable) |
| RB16M00000L101 | 16.000000 | 5.0 | ±50 | HCMOS | 50 | Enable/Disable |
| RB16M00000L311 | 16.000000 | 3.3 | ±50 | HCMOS | 15 | Tri-State (Output Enable) |
| RB16M00000L313 | 16.000000 | 3.3 | ±50 | HCMOS | 30 | Tri-State (Output Enable) |

ELECTRICAL PARAMETERS – FOR DIFFERENT PART CODE- Ta = 25°C

| PART CODE | FREQUENCY RANGE | SUPPLY VOLTAGE | FREQUENCY Tolerance | OUTPUT WAVEFORM | OUTLOAD | TRISTATE FUNCTION |
|----------------|-----------------|----------------|---------------------|-----------------|---------|---------------------------|
| | MHz | V | ppm | | pF | |
| RB16M00000L315 | 16.000000 | 3.3 | ±50 | HCMOS | 50 | Tri-State (Output Enable) |
| RB16M00000L505 | 16.000000 | 5.0 | ±30 | HCMOS | 50 | Enable/Disable |
| RB16M00000L511 | 16.000000 | 5.0 | ±50 | HCMOS | 15 | Tri-State (Output Enable) |
| RB16M00000L513 | 16.000000 | 5.0 | ±50 | HCMOS | 30 | Tri-State (Output Enable) |
| RB16M00000L515 | 16.000000 | 5.0 | ±30 | HCMOS | 50 | Tri-State (Output Enable) |
| RB16M25700L311 | 16.257000 | 3.3 | ±50 | HCMOS | 15 | Tri-State (Output Enable) |
| RB16M25700L313 | 16.257000 | 3.3 | ±50 | HCMOS | 30 | Tri-State (Output Enable) |
| RB16M25700L315 | 16.257000 | 3.3 | ±50 | HCMOS | 50 | Tri-State (Output Enable) |
| RB16M38400L100 | 16.384000 | 5.0 | ±50 | HCMOS | 50 | Tri-State (Output Enable) |
| RB16M38400L311 | 16.384000 | 3.3 | ±50 | HCMOS | 15 | Tri-State (Output Enable) |
| RB16M38400L313 | 16.384000 | 3.3 | ±50 | HCMOS | 30 | Tri-State (Output Enable) |
| RB16M38400L315 | 16.384000 | 3.3 | ±50 | HCMOS | 50 | Tri-State (Output Enable) |
| RB16M38400L511 | 16.384000 | 5.0 | ±50 | HCMOS | 15 | Tri-State (Output Enable) |
| RB16M38400L513 | 16.384000 | 5.0 | ±50 | HCMOS | 30 | Tri-State (Output Enable) |
| RB16M38400L515 | 16.384000 | 5.0 | ±30 | HCMOS | 50 | Tri-State (Output Enable) |
| RB18M00000L311 | 18.000000 | 3.3 | ±50 | HCMOS | 15 | Tri-State (Output Enable) |
| RB18M00000L313 | 18.000000 | 3.3 | ±50 | HCMOS | 30 | Tri-State (Output Enable) |
| RB18M00000L315 | 18.000000 | 3.3 | ±50 | HCMOS | 50 | Tri-State (Output Enable) |
| RB18M00000L511 | 18.000000 | 5.0 | ±50 | HCMOS | 15 | Tri-State (Output Enable) |
| RB18M00000L513 | 18.000000 | 5.0 | ±50 | HCMOS | 30 | Tri-State (Output Enable) |

ELECTRICAL PARAMETERS – FOR DIFFERENT PART CODE- Ta = 25°C

| PART CODE | FREQUENCY RANGE | SUPPLY VOLTAGE | FREQUENCY Tolerance | OUTPUT WAVEFORM | OUTLOAD | TRISTATE FUNCTION |
|----------------|-----------------|----------------|---------------------|-----------------|---------|---------------------------|
| | MHz | V | ppm | | pF | |
| RB18M00000L515 | 18.000000 | 5.0 | ±50 | HCMOS | 50 | Tri-State (Output Enable) |
| RB18M43200L100 | 18.432000 | 5.0 | ±50 | HCMOS | 50 | Tri-State (Output Enable) |
| RB18M43200L101 | 18.432000 | 5.0 | ±50 | HCMOS | 15 | Enable/Disable |
| RB18M43200L311 | 18.432000 | 3.3 | ±50 | HCMOS | 15 | Tri-State (Output Enable) |
| RB18M43200L313 | 18.432000 | 3.3 | ±50 | HCMOS | 30 | Tri-State (Output Enable) |
| RB18M43200L315 | 18.432000 | 3.3 | ±50 | HCMOS | 50 | Tri-State (Output Enable) |
| RB18M43200L511 | 18.432000 | 5.0 | ±50 | HCMOS | 15 | Tri-State (Output Enable) |
| RB18M43200L513 | 18.432000 | 5.0 | ±50 | HCMOS | 30 | Tri-State (Output Enable) |
| RB18M43200L515 | 18.432000 | 5.0 | ±30 | HCMOS | 50 | Tri-State (Output Enable) |
| RB19M66080L311 | 19.660800 | 3.3 | ±50 | HCMOS | 15 | Tri-State (Output Enable) |
| RB19M66080L313 | 19.660800 | 3.3 | ±50 | HCMOS | 30 | Tri-State (Output Enable) |
| RB19M66080L315 | 19.660800 | 3.3 | ±50 | HCMOS | 50 | Tri-State (Output Enable) |
| RB19M66080L511 | 19.660800 | 5.0 | ±50 | HCMOS | 15 | Tri-State (Output Enable) |
| RB19M66080L513 | 19.660800 | 5.0 | ±50 | HCMOS | 30 | Tri-State (Output Enable) |
| RB19M66080L515 | 19.660800 | 5.0 | ±50 | HCMOS | 50 | Tri-State (Output Enable) |
| RB20M00000L100 | 20.000000 | 5.0 | ±50 | HCMOS | 50 | Tri-State (Output Enable) |
| RB20M00000L311 | 20.000000 | 3.3 | ±50 | HCMOS | 15 | Tri-State (Output Enable) |
| RB20M00000L313 | 20.000000 | 3.3 | ±50 | HCMOS | 30 | Tri-State (Output Enable) |
| RB20M00000L315 | 20.000000 | 3.3 | ±50 | HCMOS | 50 | Tri-State (Output Enable) |
| RB20M00000L511 | 20.000000 | 5.0 | ±50 | HCMOS | 15 | Tri-State (Output Enable) |

ELECTRICAL PARAMETERS – FOR DIFFERENT PART CODE- Ta = 25°C

| PART CODE | FREQUENCY RANGE | SUPPLY VOLTAGE | FREQUENCY Tolerance | OUTPUT WAVEFORM | OUTLOAD | TRISTATE FUNCTION |
|----------------|-----------------|----------------|---------------------|-----------------|---------|---------------------------|
| | MHz | V | ppm | | pF | |
| RB20M00000L513 | 20.000000 | 5.0 | ±50 | HCMOS | 30 | Tri-State (Output Enable) |
| RB20M00000L515 | 20.000000 | 5.0 | ±30 | HCMOS | 50 | Tri-State (Output Enable) |
| RB20M48000L001 | 20.480000 | 3.3 | ±50 | TTL | 15 | Enable/Disable |
| RB20M48000L311 | 20.480000 | 3.3 | ±50 | HCMOS | 15 | Tri-State (Output Enable) |
| RB20M48000L313 | 20.480000 | 3.3 | ±50 | HCMOS | 30 | Tri-State (Output Enable) |
| RB20M48000L315 | 20.480000 | 3.3 | ±50 | HCMOS | 50 | Tri-State (Output Enable) |
| RB20M48000L511 | 20.480000 | 5.0 | ±50 | HCMOS | 15 | Tri-State (Output Enable) |
| RB20M48000L513 | 20.480000 | 5.0 | ±50 | HCMOS | 30 | Tri-State (Output Enable) |
| RB20M48000L515 | 20.480000 | 5.0 | ±50 | HCMOS | 50 | Tri-State (Output Enable) |
| RB24M00000L100 | 24.000000 | 5.0 | ±50 | HCMOS | 50 | Tri-State (Output Enable) |
| RB24M00000L101 | 24.000000 | 5.0 | ±50 | HCMOS | 50 | Enable/Disable |
| RB24M00000L311 | 24.000000 | 3.3 | ±50 | HCMOS | 15 | Tri-State (Output Enable) |
| RB24M00000L313 | 24.000000 | 3.3 | ±50 | HCMOS | 30 | Tri-State (Output Enable) |
| RB24M00000L315 | 24.000000 | 3.3 | ±50 | HCMOS | 50 | Tri-State (Output Enable) |
| RB24M00000L505 | 24.000000 | 5.0 | ±30 | HCMOS | 50 | Enable/Disable |
| RB24M00000L511 | 24.000000 | 5.0 | ±50 | HCMOS | 15 | Tri-State (Output Enable) |
| RB24M00000L513 | 24.000000 | 5.0 | ±50 | HCMOS | 30 | Tri-State (Output Enable) |
| RB24M00000L515 | 24.000000 | 5.0 | ±30 | HCMOS | 50 | Tri-State (Output Enable) |
| RB24M57600L100 | 24.576000 | 5.0 | ±50 | HCMOS | 50 | Tri-State (Output Enable) |
| RB24M57600L311 | 24.576000 | 3.3 | ±50 | HCMOS | 15 | Tri-State (Output Enable) |

ELECTRICAL PARAMETERS – FOR DIFFERENT PART CODE- Ta = 25°C

| PART CODE | FREQUENCY RANGE | SUPPLY VOLTAGE | FREQUENCY Tolerance | OUTPUT WAVEFORM | OUTLOAD | TRISTATE FUNCTION |
|----------------|-----------------|----------------|---------------------|-----------------|---------|---------------------------|
| | MHz | V | ppm | | pF | |
| RB24M57600L313 | 24.576000 | 3.3 | ±50 | HCMOS | 30 | Tri-State (Output Enable) |
| RB24M57600L315 | 24.576000 | 3.3 | ±50 | HCMOS | 50 | Tri-State (Output Enable) |
| RB24M57600L511 | 24.576000 | 5.0 | ±50 | HCMOS | 15 | Tri-State (Output Enable) |
| RB24M57600L513 | 24.576000 | 5.0 | ±50 | HCMOS | 30 | Tri-State (Output Enable) |
| RB24M57600L515 | 24.576000 | 5.0 | ±30 | HCMOS | 50 | Tri-State (Output Enable) |
| RB25M00000L100 | 25.000000 | 5.0 | ±50 | HCMOS | 50 | Tri-State (Output Enable) |
| RB25M00000L311 | 25.000000 | 3.3 | ±50 | HCMOS | 15 | Tri-State (Output Enable) |
| RB25M00000L313 | 25.000000 | 3.3 | ±50 | HCMOS | 30 | Tri-State (Output Enable) |
| RB25M00000L315 | 25.000000 | 3.3 | ±50 | HCMOS | 50 | Tri-State (Output Enable) |
| RB25M00000L511 | 25.000000 | 5.0 | ±50 | HCMOS | 15 | Tri-State (Output Enable) |
| RB25M00000L513 | 25.000000 | 5.0 | ±50 | HCMOS | 30 | Tri-State (Output Enable) |
| RB25M00000L515 | 25.000000 | 5.0 | ±30 | HCMOS | 50 | Tri-State (Output Enable) |
| RB25M17500L311 | 25.175000 | 3.3 | ±50 | HCMOS | 15 | Tri-State (Output Enable) |
| RB25M17500L313 | 25.175000 | 3.3 | ±50 | HCMOS | 30 | Tri-State (Output Enable) |
| RB25M17500L315 | 25.175000 | 3.3 | ±50 | HCMOS | 50 | Tri-State (Output Enable) |
| RB26M88000L311 | 26.880000 | 3.3 | ±50 | HCMOS | 15 | Tri-State (Output Enable) |
| RB26M88000L313 | 26.880000 | 3.3 | ±50 | HCMOS | 30 | Tri-State (Output Enable) |
| RB26M88000L315 | 26.880000 | 3.3 | ±50 | HCMOS | 50 | Tri-State (Output Enable) |
| RB27M00000L311 | 27.000000 | 3.3 | ±50 | HCMOS | 15 | Tri-State (Output Enable) |
| RB27M00000L313 | 27.000000 | 3.3 | ±50 | HCMOS | 30 | Tri-State (Output Enable) |

ELECTRICAL PARAMETERS – FOR DIFFERENT PART CODE- Ta = 25°C

| PART CODE | FREQUENCY RANGE | SUPPLY VOLTAGE | FREQUENCY Tolerance | OUTPUT WAVEFORM | OUTLOAD | TRISTATE FUNCTION |
|----------------|-----------------|----------------|---------------------|-----------------|---------|---------------------------|
| | MHz | V | ppm | | pF | |
| RB27M00000L315 | 27.000000 | 3.3 | ±50 | HCMOS | 50 | Tri-State (Output Enable) |
| RB27M00000L511 | 27.000000 | 5.0 | ±50 | HCMOS | 15 | Tri-State (Output Enable) |
| RB27M00000L513 | 27.000000 | 5.0 | ±50 | HCMOS | 30 | Tri-State (Output Enable) |
| RB27M00000L515 | 27.000000 | 5.0 | ±50 | HCMOS | 50 | Tri-State (Output Enable) |
| RB28M00000L311 | 28.000000 | 3.3 | ±50 | HCMOS | 15 | Tri-State (Output Enable) |
| RB28M00000L313 | 28.000000 | 3.3 | ±50 | HCMOS | 30 | Tri-State (Output Enable) |
| RB28M00000L315 | 28.000000 | 3.3 | ±50 | HCMOS | 50 | Tri-State (Output Enable) |
| RB28M32200L311 | 28.322000 | 3.3 | ±50 | HCMOS | 15 | Tri-State (Output Enable) |
| RB28M32200L313 | 28.322000 | 3.3 | ±50 | HCMOS | 30 | Tri-State (Output Enable) |
| RB28M32200L315 | 28.322000 | 3.3 | ±50 | HCMOS | 50 | Tri-State (Output Enable) |
| RB28M32200L511 | 28.322000 | 5.0 | ±50 | HCMOS | 15 | Tri-State (Output Enable) |
| RB28M32200L513 | 28.322000 | 5.0 | ±50 | HCMOS | 30 | Tri-State (Output Enable) |
| RB28M32200L515 | 28.322000 | 5.0 | ±50 | HCMOS | 50 | Tri-State (Output Enable) |
| RB29M49120L311 | 29.491200 | 3.3 | ±50 | HCMOS | 15 | Tri-State (Output Enable) |
| RB29M49120L313 | 29.491200 | 3.3 | ±50 | HCMOS | 30 | Tri-State (Output Enable) |
| RB29M49120L315 | 29.491200 | 3.3 | ±50 | HCMOS | 50 | Tri-State (Output Enable) |
| RB29M49120L511 | 29.491200 | 5.0 | ±50 | HCMOS | 15 | Tri-State (Output Enable) |
| RB29M49120L513 | 29.491200 | 5.0 | ±50 | HCMOS | 30 | Tri-State (Output Enable) |
| RB29M49120L515 | 29.491200 | 5.0 | ±50 | HCMOS | 50 | Tri-State (Output Enable) |
| RB30M00000L311 | 30.000000 | 3.3 | ±50 | HCMOS | 15 | Tri-State (Output Enable) |

ELECTRICAL PARAMETERS – FOR DIFFERENT PART CODE- Ta = 25°C

| PART CODE | FREQUENCY RANGE | SUPPLY VOLTAGE | FREQUENCY Tolerance | OUTPUT WAVEFORM | OUTLOAD | TRISTATE FUNCTION |
|----------------|-----------------|----------------|---------------------|-----------------|---------|---------------------------|
| | MHz | V | ppm | | pF | |
| RB30M00000L313 | 30.000000 | 3.3 | ±50 | HCMOS | 30 | Tri-State (Output Enable) |
| RB30M00000L315 | 30.000000 | 3.3 | ±50 | HCMOS | 50 | Tri-State (Output Enable) |
| RB30M00000L511 | 30.000000 | 5.0 | ±50 | HCMOS | 15 | Tri-State (Output Enable) |
| RB30M00000L513 | 30.000000 | 5.0 | ±50 | HCMOS | 30 | Tri-State (Output Enable) |
| RB30M00000L515 | 30.000000 | 5.0 | ±50 | HCMOS | 50 | Tri-State (Output Enable) |
| RB32M00000L100 | 32.000000 | 5.0 | ±50 | HCMOS | 50 | Tri-State (Output Enable) |
| RB32M00000L311 | 32.000000 | 3.3 | ±50 | HCMOS | 15 | Tri-State (Output Enable) |
| RB32M00000L313 | 32.000000 | 3.3 | ±50 | HCMOS | 30 | Tri-State (Output Enable) |
| RB32M00000L315 | 32.000000 | 3.3 | ±50 | HCMOS | 50 | Tri-State (Output Enable) |
| RB32M00000L511 | 32.000000 | 5.0 | ±50 | HCMOS | 15 | Tri-State (Output Enable) |
| RB32M00000L513 | 32.000000 | 5.0 | ±50 | HCMOS | 30 | Tri-State (Output Enable) |
| RB32M00000L515 | 32.000000 | 5.0 | ±30 | HCMOS | 50 | Tri-State (Output Enable) |
| RB32M76800L100 | 32.768000 | 5.0 | ±50 | HCMOS | 50 | Tri-State (Output Enable) |
| RB32M76800L311 | 32.768000 | 3.3 | ±50 | HCMOS | 15 | Tri-State (Output Enable) |
| RB32M76800L313 | 32.768000 | 3.3 | ±50 | HCMOS | 30 | Tri-State (Output Enable) |
| RB32M76800L315 | 32.768000 | 3.3 | ±50 | HCMOS | 50 | Tri-State (Output Enable) |
| RB32M76800L511 | 32.768000 | 5.0 | ±50 | HCMOS | 15 | Tri-State (Output Enable) |
| RB32M76800L513 | 32.768000 | 5.0 | ±50 | HCMOS | 30 | Tri-State (Output Enable) |
| RB32M76800L515 | 32.768000 | 5.0 | ±30 | HCMOS | 50 | Tri-State (Output Enable) |
| RB33M00000L311 | 33.000000 | 3.3 | ±50 | HCMOS | 15 | Tri-State (Output Enable) |

ELECTRICAL PARAMETERS – FOR DIFFERENT PART CODE- Ta = 25°C

| PART CODE | FREQUENCY RANGE | SUPPLY VOLTAGE | FREQUENCY Tolerance | OUTPUT WAVEFORM | OUTLOAD | TRISTATE FUNCTION |
|----------------|-----------------|----------------|---------------------|-----------------|---------|---------------------------|
| | MHz | V | ppm | | pF | |
| RB33M00000L313 | 33.000000 | 3.3 | ±50 | HCMOS | 30 | Tri-State (Output Enable) |
| RB33M00000L315 | 33.000000 | 3.3 | ±50 | HCMOS | 50 | Tri-State (Output Enable) |
| RB33M00000L511 | 33.000000 | 5.0 | ±50 | HCMOS | 15 | Tri-State (Output Enable) |
| RB33M00000L513 | 33.000000 | 5.0 | ±50 | HCMOS | 30 | Tri-State (Output Enable) |
| RB38M00000L311 | 38.000000 | 3.3 | ±50 | HCMOS | 50 | Tri-State (Output Enable) |
| RB38M00000L313 | 38.000000 | 3.3 | ±50 | HCMOS | 15 | Tri-State (Output Enable) |
| RB38M00000L315 | 38.000000 | 3.3 | ±50 | HCMOS | 30 | Tri-State (Output Enable) |
| RB40M00000L100 | 40.000000 | 5.0 | ±50 | HCMOS | 50 | Tri-State (Output Enable) |
| RB40M00000L102 | 40.000000 | 5.0 | ±50 | HCMOS | 30 | Enable/Disable |
| RB40M00000L311 | 40.000000 | 3.3 | ±50 | HCMOS | 15 | Tri-State (Output Enable) |
| RB40M00000L313 | 40.000000 | 3.3 | ±50 | HCMOS | 30 | Tri-State (Output Enable) |
| RB40M00000L315 | 40.000000 | 3.3 | ±50 | HCMOS | 50 | Tri-State (Output Enable) |
| RB40M00000L511 | 40.000000 | 5.0 | ±50 | HCMOS | 15 | Tri-State (Output Enable) |
| RB40M00000L513 | 40.000000 | 5.0 | ±50 | HCMOS | 30 | Tri-State (Output Enable) |
| RB40M00000L515 | 40.000000 | 5.0 | ±30 | HCMOS | 50 | Tri-State (Output Enable) |
| RB40M25000L311 | 40.250000 | 3.3 | ±50 | HCMOS | 15 | Tri-State (Output Enable) |
| RB40M25000L313 | 40.250000 | 3.3 | ±50 | HCMOS | 30 | Tri-State (Output Enable) |
| RB40M25000L315 | 40.250000 | 3.3 | ±50 | HCMOS | 50 | Tri-State (Output Enable) |
| RB46M00000L311 | 46.000000 | 3.3 | ±50 | HCMOS | 15 | Tri-State (Output Enable) |
| RB46M00000L313 | 46.000000 | 3.3 | ±50 | HCMOS | 30 | Tri-State (Output Enable) |

ELECTRICAL PARAMETERS – FOR DIFFERENT PART CODE- Ta = 25°C

| PART CODE | FREQUENCY RANGE | SUPPLY VOLTAGE | FREQUENCY Tolerance | OUTPUT WAVEFORM | OUTLOAD | TRISTATE FUNCTION |
|--------------------------------|-----------------|----------------|---------------------|-----------------|---------|---------------------------|
| | MHz | V | ppm | | pF | |
| RB46M00000L315 | 46.000000 | 3.3 | ±50 | HCMOS | 50 | Tri-State (Output Enable) |
| RB48M00000L100 | 48.000000 | 5.0 | ±50 | HCMOS | 50 | Tri-State (Output Enable) |
| RB48M00000L311 | 48.000000 | 3.3 | ±50 | HCMOS | 15 | Tri-State (Output Enable) |
| RB48M00000L313 | 48.000000 | 3.3 | ±50 | HCMOS | 30 | Tri-State (Output Enable) |
| RB48M00000L315 | 48.000000 | 3.3 | ±50 | HCMOS | 50 | Tri-State (Output Enable) |
| RB48M00000L511 | 48.000000 | 5.0 | ±50 | HCMOS | 15 | Tri-State (Output Enable) |
| RB48M00000L513 | 48.000000 | 5.0 | ±50 | HCMOS | 30 | Tri-State (Output Enable) |
| RB48M00000L515 | 48.000000 | 5.0 | ±30 | HCMOS | 50 | Tri-State (Output Enable) |
| RB50M00000L100 | 50.000000 | 5.0 | ±50 | HCMOS | 50 | Tri-State (Output Enable) |
| RB50M00000L101 | 50.000000 | 5.0 | ±50 | HCMOS | 50 | Tri-State (Output Enable) |
| RB50M00000L311 | 50.000000 | 3.3 | ±50 | HCMOS | 15 | Tri-State (Output Enable) |
| RB50M00000L313 | 50.000000 | 3.3 | ±50 | HCMOS | 30 | Tri-State (Output Enable) |
| RB50M00000L315 | 50.000000 | 3.3 | ±50 | HCMOS | 50 | Tri-State (Output Enable) |
| RB50M00000L511 | 50.000000 | 5.0 | ±50 | HCMOS | 15 | Tri-State (Output Enable) |
| RB50M00000L513 | 50.000000 | 5.0 | ±50 | HCMOS | 30 | Tri-State (Output Enable) |
| RB50M00000L515 | 50.000000 | 5.0 | ±30 | HCMOS | 50 | Tri-State (Output Enable) |
| RB60M00000L311 | 60.000000 | 3.3 | ±50 | HCMOS | 15 | Tri-State (Output Enable) |
| RB60M00000L313 | 60.000000 | 3.3 | ±50 | HCMOS | 30 | Tri-State (Output Enable) |
| RB60M00000L315 | 60.000000 | 3.3 | ±50 | HCMOS | 50 | Tri-State (Output Enable) |
| RB60M00000L511 | 60.000000 | 5.0 | ±50 | HCMOS | 15 | Tri-State (Output Enable) |

ELECTRICAL PARAMETERS – FOR DIFFERENT PART CODE- Ta = 25°C

| PART CODE | FREQUENCY RANGE | SUPPLY VOLTAGE | FREQUENCY Tolerance | OUTPUT WAVEFORM | OUTLOAD | TRISTATE FUNCTION |
|----------------|-----------------|----------------|---------------------|-----------------|---------|---------------------------|
| | MHz | V | ppm | | pF | |
| RB60M00000L513 | 60.000000 | 5.0 | ±50 | HCMOS | 30 | Tri-State (Output Enable) |
| RB60M00000L515 | 60.000000 | 5.0 | ±50 | HCMOS | 50 | Tri-State (Output Enable) |
| RB64M00000L311 | 64.000000 | 3.3 | ±50 | HCMOS | 15 | Tri-State (Output Enable) |
| RB64M00000L313 | 64.000000 | 3.3 | ±50 | HCMOS | 30 | Tri-State (Output Enable) |
| RB64M00000L315 | 64.000000 | 3.3 | ±50 | HCMOS | 50 | Tri-State (Output Enable) |
| RB64M00000L511 | 64.000000 | 5.0 | ±50 | HCMOS | 15 | Tri-State (Output Enable) |
| RB64M00000L513 | 64.000000 | 5.0 | ±50 | HCMOS | 30 | Tri-State (Output Enable) |
| RB64M00000L515 | 64.000000 | 5.0 | ±50 | HCMOS | 50 | Tri-State (Output Enable) |
| RB65M53600L101 | 65.536000 | 5.0 | ±50 | TTL | 15 | Enable/Disable |
| RB65M53600L311 | 65.536000 | 3.3 | ±50 | HCMOS | 15 | Tri-State (Output Enable) |
| RB65M53600L313 | 65.536000 | 3.3 | ±50 | HCMOS | 30 | Tri-State (Output Enable) |
| RB65M53600L315 | 65.536000 | 3.3 | ±50 | HCMOS | 50 | Tri-State (Output Enable) |
| RB65M53600L511 | 65.536000 | 5.0 | ±50 | HCMOS | 15 | Tri-State (Output Enable) |
| RB65M53600L513 | 65.536000 | 5.0 | ±50 | HCMOS | 30 | Tri-State (Output Enable) |
| RB65M53600L515 | 65.536000 | 5.0 | ±50 | HCMOS | 50 | Tri-State (Output Enable) |
| RB66M00000L311 | 66.000000 | 3.3 | ±50 | HCMOS | 15 | Tri-State (Output Enable) |
| RB66M00000L313 | 66.000000 | 3.3 | ±50 | HCMOS | 30 | Tri-State (Output Enable) |
| RB66M00000L315 | 66.000000 | 3.3 | ±50 | HCMOS | 50 | Tri-State (Output Enable) |
| RB66M00000L511 | 66.000000 | 5.0 | ±50 | HCMOS | 15 | Tri-State (Output Enable) |
| RB66M00000L513 | 66.000000 | 5.0 | ±50 | HCMOS | 30 | Tri-State (Output Enable) |

ELECTRICAL PARAMETERS – FOR DIFFERENT PART CODE- Ta = 25°C

| PART CODE | FREQUENCY RANGE | SUPPLY VOLTAGE | FREQUENCY Tolerance | OUTPUT WAVEFORM | OUTLOAD | TRISTATE FUNCTION |
|-----------------|-----------------|----------------|---------------------|-----------------|---------|---------------------------|
| | MHz | V | ppm | | pF | |
| RB66M00000L515 | 66.000000 | 5.0 | ±50 | HCMOS | 50 | Tri-State (Output Enable) |
| RB80M00000L100 | 80.000000 | 5.0 | ±50 | HCMOS | 15 | Tri-State (Output Enable) |
| RB80M00000L311 | 80.000000 | 3.3 | ±50 | HCMOS | 15 | Tri-State (Output Enable) |
| RB80M00000L313 | 80.000000 | 3.3 | ±50 | HCMOS | 30 | Tri-State (Output Enable) |
| RB80M00000L315 | 80.000000 | 3.3 | ±50 | HCMOS | 50 | Tri-State (Output Enable) |
| RB80M00000L511 | 80.000000 | 5.0 | ±30 | HCMOS | 15 | Tri-State (Output Enable) |
| RB80M00000L513 | 80.000000 | 5.0 | ±50 | HCMOS | 30 | Tri-State (Output Enable) |
| RB80M00000L515 | 80.000000 | 5.0 | ±50 | HCMOS | 50 | Tri-State (Output Enable) |
| RB96M00000L311 | 96.000000 | 3.3 | ±50 | HCMOS | 15 | Tri-State (Output Enable) |
| RB96M00000L313 | 96.000000 | 3.3 | ±50 | HCMOS | 30 | Tri-State (Output Enable) |
| RB96M00000L315 | 96.000000 | 3.3 | ±50 | HCMOS | 50 | Tri-State (Output Enable) |
| RB100M00000L311 | 100.000000 | 3.3 | ±50 | HCMOS | 15 | Tri-State (Output Enable) |
| RB100M00000L313 | 100.000000 | 3.3 | ±50 | HCMOS | 30 | Tri-State (Output Enable) |
| RB100M00000L315 | 100.000000 | 3.3 | ±50 | HCMOS | 50 | Tri-State (Output Enable) |
| RB100M00000L511 | 100.000000 | 5.0 | ±50 | HCMOS | 15 | Tri-State (Output Enable) |
| RB100M00000L513 | 100.000000 | 5.0 | ±50 | HCMOS | 30 | Tri-State (Output Enable) |
| RB100M00000L515 | 100.000000 | 5.0 | ±50 | HCMOS | 50 | Tri-State (Output Enable) |
| | | | | | | |
| | | | | | | |
| | | | | | | |

IMPORTANT NOTES AND DISCLAIMER

1. **ROHS COMPLIANCE:** The levels of RoHS restricted materials in this product are below the maximum concentration values (also referred to as the threshold limits) permitted for such substances, or are used in an exempted application, in accordance with EU RoHS Directive (EU) 2015/863 EC (RoHS3). RoHS Test Report for this product can be obtained at Download Center.
2. **REACH COMPLIANCE:** REACH substances of high concern (SVHCs) information is available for this product. Since the European Chemical Agency (ECHA) has published notice of their intent to frequently revise the SVHC listing for the foreseeable future, REACH Test Report for this product can be obtained at Download Center.
3. All Product parametric performance is indicated in the Electrical Characteristics for the listed herein test conditions, unless otherwise noted. Product performance may not be indicated by the Electrical Characteristics if operated under different conditions.
4. NextGen Component, Inc (*NextGen*) reserves the right to make changes to this document and its products and specifications at any time without notice. Customers should obtain and confirm the latest product information and specifications before final design, purchase or use.
5. *NextGen* makes no warranty, representation or guarantee regarding the suitability of its products for any particular purpose, not does *NextGen* assume any liability for application assistance or customer product design.
6. *NextGen* does not warrant or accept any liability with products which are purchased or used for any unintended or unauthorized application. No license is granted by implication or otherwise under any intellectual property rights of NextGen.
7. *NextGen* products are not authorized for use as critical components in life support devices or systems without express written approval by *NextGen*.
8. *NextGen* requires that customers first obtain an RMA (Returned Merchandise Authorization) number prior to returning any products. Returns must be made within 30 days of the date of invoice, be in the original packaging, unused and like-new condition. At the time of quoting or purchasing, a product may say that it is Non-Cancelable/ Non-Returnable (NCNR). These products are not returnable and not refundable.